



Innovative rustfrie løsninger

Quality

Designs

Ejector

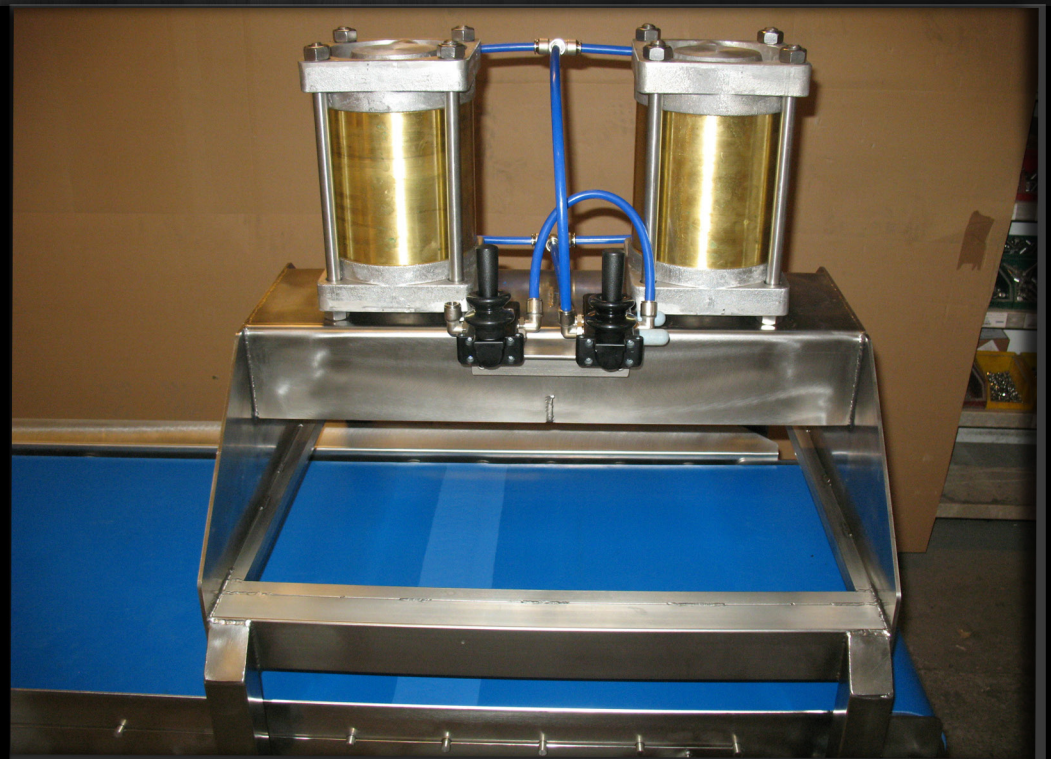




Innovative rustfrie løsninger

Contents

- s.3 Single block ejector- with belt conveyer.
- s.4 Single block ejector.
- s.5 Double block ejector.
- s.6 Single block ejector.





Innovative rustfrie løsninger

Single block ejector-With belt conveyer

Air supply:

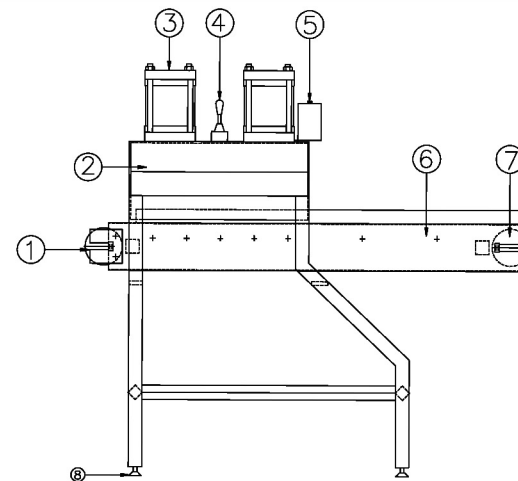
Clean compressed; air 7-9 bar
Consumption: 48 liter per block (free air)

Measurements:

Length: 1.350 mm
Width: 575 mm
Height: 1.350 mm
Weight: 90 kg

Installation:

1. Unpack the ejector.
2. Align the ejector by means of the 4 adjustable feet.
3. Connect the compressed air supply to the inlet on the top of the ejector. (1/4) hose nipple). Ensure that supply line allows sufficient flow.
4. Connect the powersupply to the drummotor.



- ① Drummotor
- ② Inlet/outlet of frame
- ③ Pneumatic cylinder Ø150 x 85
- ④ Valve for ejection of block
- ⑤ Silencer
- ⑥ Belt conveyer
- ⑦ Drum
- ⑧ Adjustable foot

General description:

The semi-automatic block ejector is, except for cylinders and valves, executed in stainless steel (A151 304), and consists of a pressing section and a tiltable carton holder. The pressing section is equipped with 2 pneumatic cylinders and a valve. The ejection of a block is a 3 step operation. The operator feeds in the frame, up side down, and activates the valve when the frame is in correct position. The block is carried out by the conveyer and it is ready for packing. A trained operator can proces 8-10 blocks/min.



Single block ejector

Air supply:

Clean compressed; air 7-9 bar

Consumption: 48 liter per block (free air)

Measurements:

Length: 1.260 mm

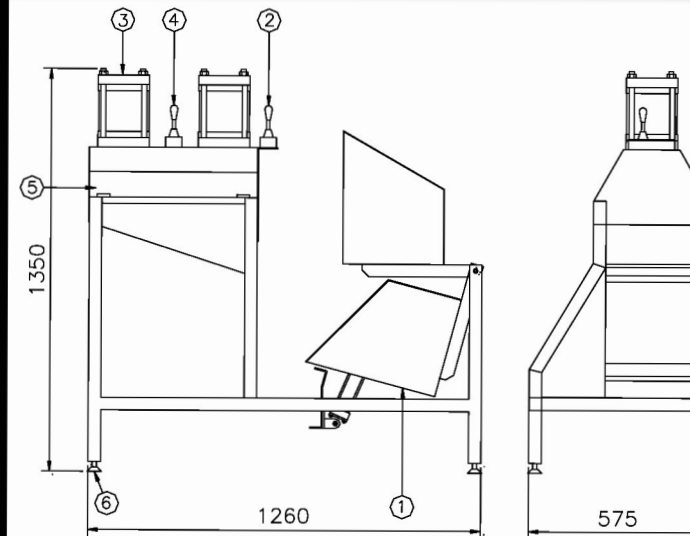
Width: 575 mm

Height: 1.260 mm

Weight: 90 kg

Installation:

1. Unpack the ejector.
2. Align the ejector by means of the 4 adjustable feet.
3. Connect the compressed air supply to the inlet on the top of the ejector. (1/4) hose nipple). Ensure that supply line allows sufficient flow.
4. The ejector is ready for operation.



- ① Tiltable carton-holder
- ② Ventil for master-karton holder
- ③ Pneumatic cylinder
- ④ Valve for ejection of block
- ⑤ Inlet/outlet of frame
- ⑥ Adjustable foot

General description:

The semi-automatic block ejector is, except for cylinders and valves, executed in stainless steel (A151 304), and consists of a pressing section and a tiltable carton holder. The pressing section is equipped with 2 pneumatic cylinders and a valve. The ejection of a block is a 3 step operation. The operator feeds in the frame, up side down, and activates the valve when the frame is in correct position. The block is carried out by the conveyer and it is ready for packing. A trained operator can process 8-10 blocks/min.



Innovative rustfrie løsninger

Double block ejector

Air supply:

Clean compressed; air 7-9 bar

Consumption: 48 liter per block (free air)

Measurements:

Length: 1.790 mm

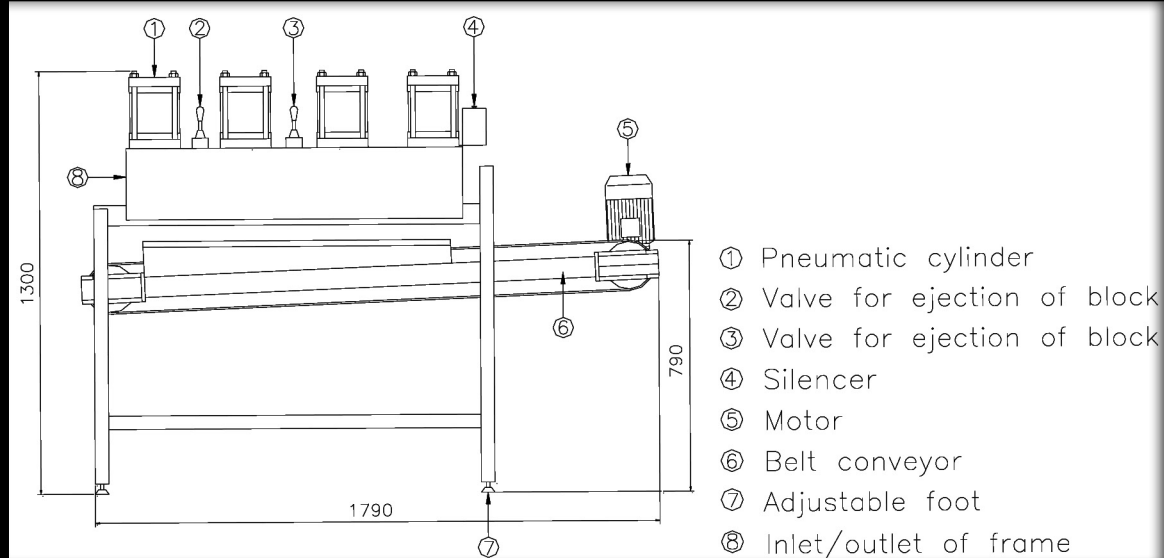
Width: 610 mm

Height: 1.300 mm

Weight: 190 kg

Installation:

1. Unpack the ejector.
2. Align the ejector by means of the 4 adjustable feet.
3. Connect the compressed air supply to the inlet on the top of the ejector. (1/4) hose nipple). Ensure that supply line allows sufficient flow.
4. The ejector is ready for operation.



General description:

The semi-automatic double block ejector is executed in stainless steel (AISI 304), and consists of a pressing section and a belt conveyor. The pressing section is equipped with 4 pneumatic cylinders and 2 valves. The ejection of blocks is a 4 step operation. The operator feeds in the frame, up side down, and activates the valve when the frame is in correct position. The belt conveyor brings the 2 blocks for further transport or packing. A trained operator can process 8-10 blocks/min.



Single block ejector

Air supply:

Clean compressed; air 7-9 bar

Consumption: 48 liter per block (free air)

Measurements:

Length: 1.050 mm

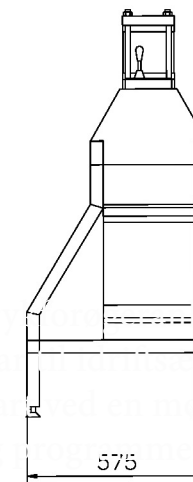
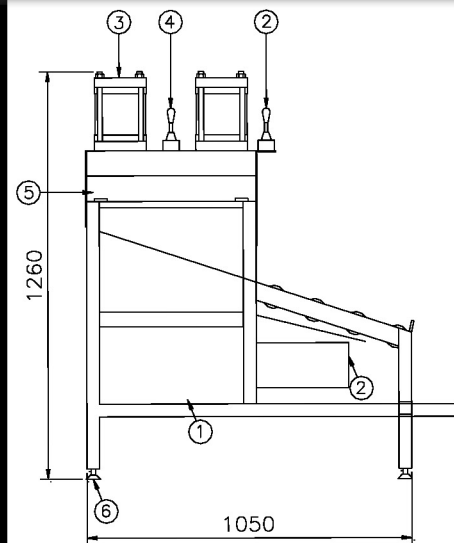
Width: 575 mm

Height: 1.260 mm

Weight: 90 kg

Installation:

1. Unpack the ejector.
2. Align the ejector by means of the 4 adjustable feet.
3. Connect the motor: 3 x 380 V.
4. The ejector is ready for operation.



- ① Pumpsektion
- ② Motor
- ③ Hydraulic cylinder
- ④ Valve for ejection of block
- ⑤ Inlet/outlet of frame
- ⑥ Adjustable foot

General description:

The semi-automatic block ejector is executed in stainless steel AISI 304.

The pressing section is equipped with 2 hydraulic, a valve and a pumpstation.

The oil tank contains 20 l. and the elektrik motor is 3 x 380 V. 1.5 kw.



CONTACT BOATECH AT: 97962055